



MSG[®] Centac[®] Centrifugal Air Compressors

130-4500 kW



A Tradition of Proven Reliability, Efficiency and Productivity



Over 100 years of Oil-Free Innovation

We introduced our first oil-free centrifugal compressor in 1912, and over the decades we've continued to develop rugged, reliable, industry-leading compressor technologies.

Ingersoll Rand has become the leader in oil-free centrifugal compressed air because our technological advances are designed for the specific performance needs of our customers' industries.

No matter what the application, Ingersoll Rand centrifugal compressors help eliminate inefficiencies, contaminants and breakdowns that can result in costly downtime, product liability or damage to your brand reputation, while reducing total life cycle costs.

RELIABILITY

Superior Design, Superior Life

- Fewer moving parts means less downtime
- Dynamically balanced rotor assemblies ensure extremely low vibration
- Carbon ring seals minimise air leakage

Lowers cost of ownership

EFFICIENCY

Optimised Components and Systems

- Multi-stage compressors combine performance with energy savings
- Advanced impeller design provides maximum pressure control over the widest operating range

Reduces energy use and operating costs

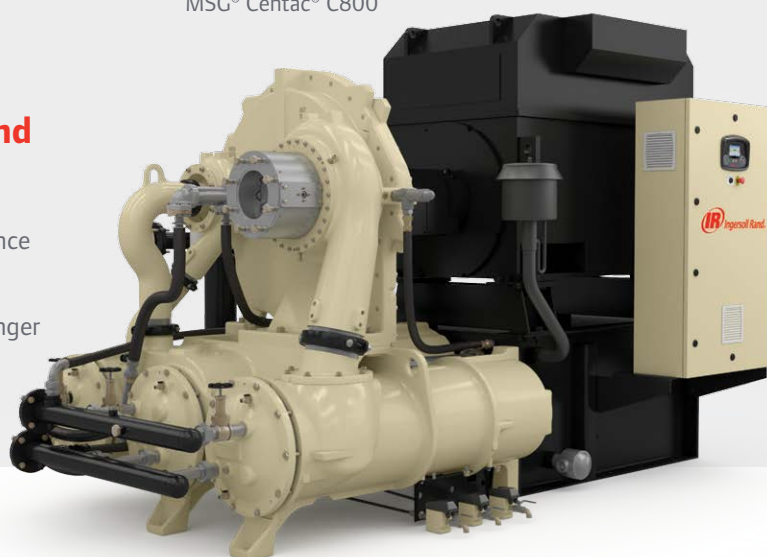
PRODUCTIVITY

User-Friendly Operation and Accessibility

- Easy-access components make maintenance faster and easier
- Simplified compressor design provides longer intervals between maintenance

Maximises uptime

MSG® Centac® C800



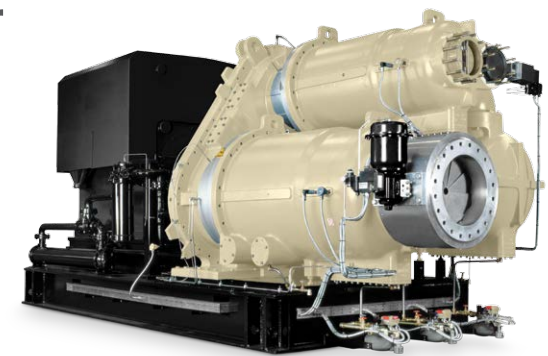
The Centrifugal Technology Your Industry Demands



ISO 8573 **Class 0**
Oil-Free Air

Oil-Free, Risk Free

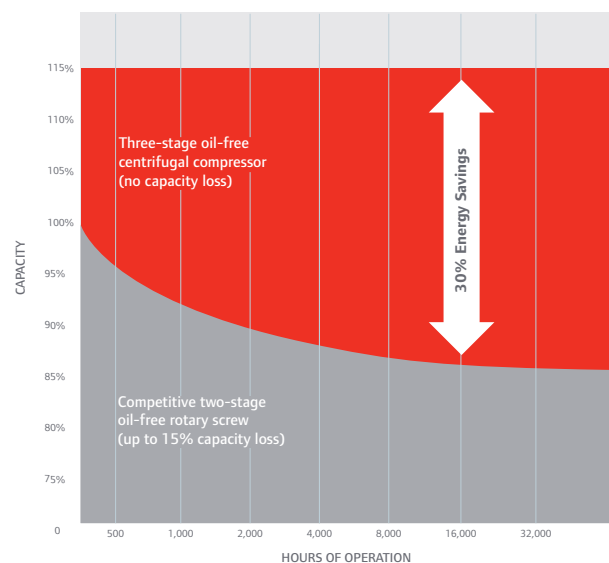
The first to be certified ISO 8573-1:2001 Class 0, our oil-free centrifugal compressors offer efficient, economical and reliable solutions for delivering compressed air. These high-performing, versatile compressors provide 100% oil-free air in all operating conditions.



MSG Centac C3000

Greater Capacity for Greater Efficiency

Ingersoll Rand centrifugal compressors offer up to a 15% capacity advantage over competitive two-stage, oil-free compressors. This advantage increases to as much as 30% as our capacity remains constant, while competitive capacities decrease by up to 15%.



MSG Centac...Engineered for Performance

Ingersoll Rand centrifugal compressors are designed for applications where reliability, productivity and efficiency are essential to getting the job done right...and the compressor's packaged design makes it easy to install wherever needed.

Long-Life Gears

25-year rated, uniformly hardened gears provide extreme reliability

Efficient Impeller Design

Backward leaning impellers provide constant pressure control while maximising efficiency and turndown range

Moisture Separator

Stainless steel moisture separator provides superior reliability and helps prevent corrosion, ensuring high air quality

Coolers

Precisely engineered coolers maintain a low pressure drop and the large surface area provides maximum cooling efficiency. The integral cooler design helps the compressor keep a compact footprint*

*Optional external configurations available

High Capacity Bearings

Hydrodynamic bearings are completely non-contact, offering virtually unlimited life and maximum efficiency with 2-3 times the lifespan of traditional bearings

Rotors

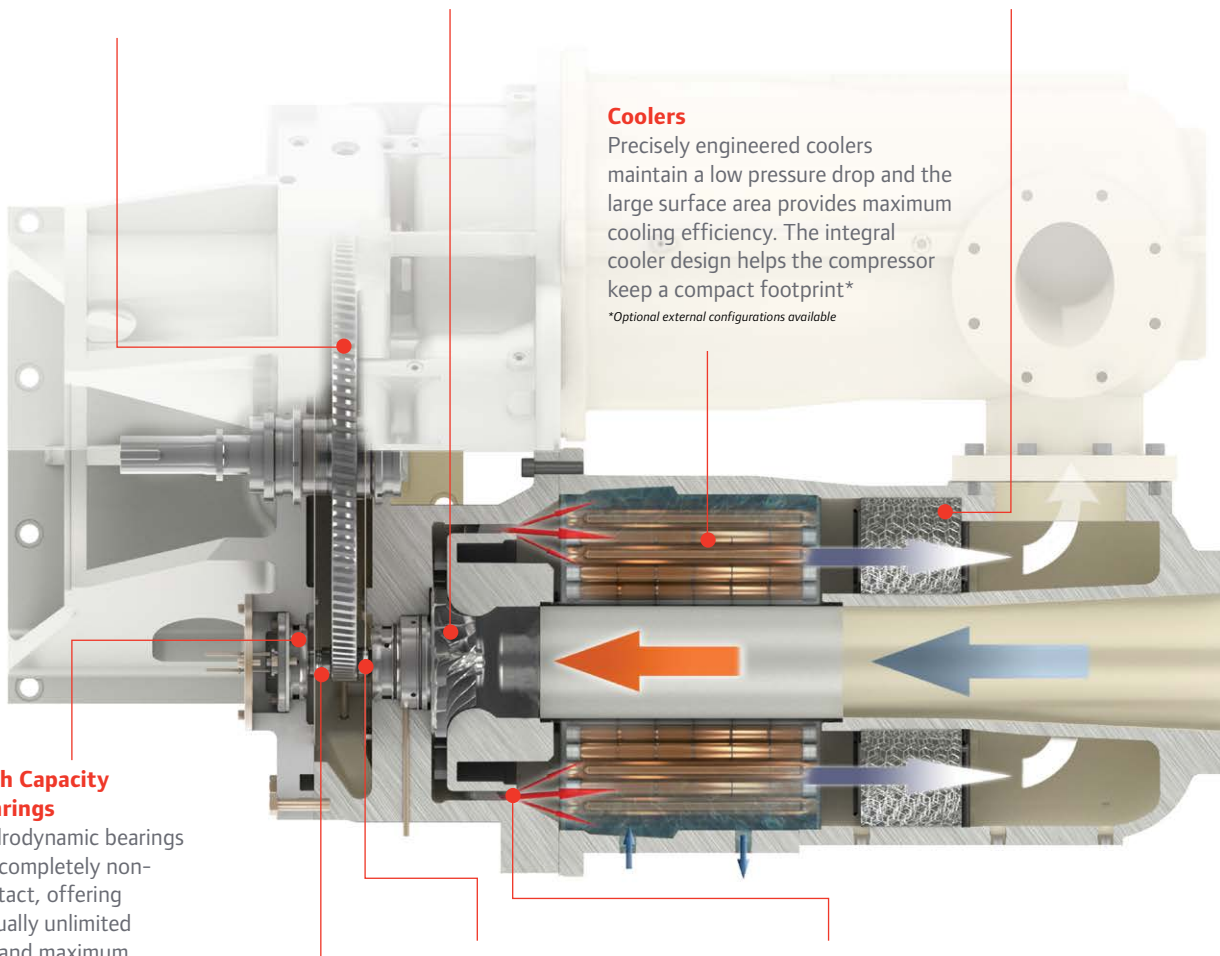
High grade steel rotors are fully balanced and require no coating, providing constant performance over time

Seals

Fully floating, non-contact carbon ring seals minimise air leakage and prevent oil from migrating into the compressed air stream; single-piece seal construction provides significantly better performance than other technologies, saving valuable compressed air

Diffuser

Optimally designed to work with Ingersoll Rand's backward leaning impellers for maximum efficiency



Advanced Centrifugal Control

Optimise Your Compressed Air System with Xe-Series Controls

The Ingersoll Rand Xe-Series controller uses the latest control algorithms to help lower energy consumption. Built-in control logic ensures system reliability by precisely managing discharge pressure and maximising throttle range. The controller's intuitive, high-resolution color display makes critical information quick and easy to find. And with web-enabled alerts, the Xe-Series controller helps you maintain optimal operation automatically.



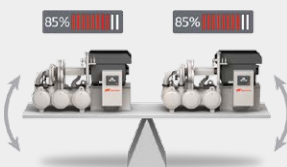
Web-Enabled Communication

- Start/stop/load/unload and checks parameters remotely
- Email notification of alarms and trips
- Built-in performance reporting and visual trending with automated inspection logs



More Connectivity Choices

- Communicates directly with your DCS system through Modbus
- Ethernet connection enables communication and control through tablets, computers or mobile devices
- Connects seamlessly with Ingersoll Rand system controls
- Sequences up to four additional controlled compressors with no additional hardware



Intelligent Compressor Control

- Constant Pressure Control-Continually maintains precise discharge pressure to adjust for sudden demand variations
- Auto Dual Control-Provides enhanced energy savings during partial load conditions
- Energy Smart Set Point (ESS)-Adjusts settings to balance and share loads between multiple compressors in the same system, reducing bypassed air and saving energy

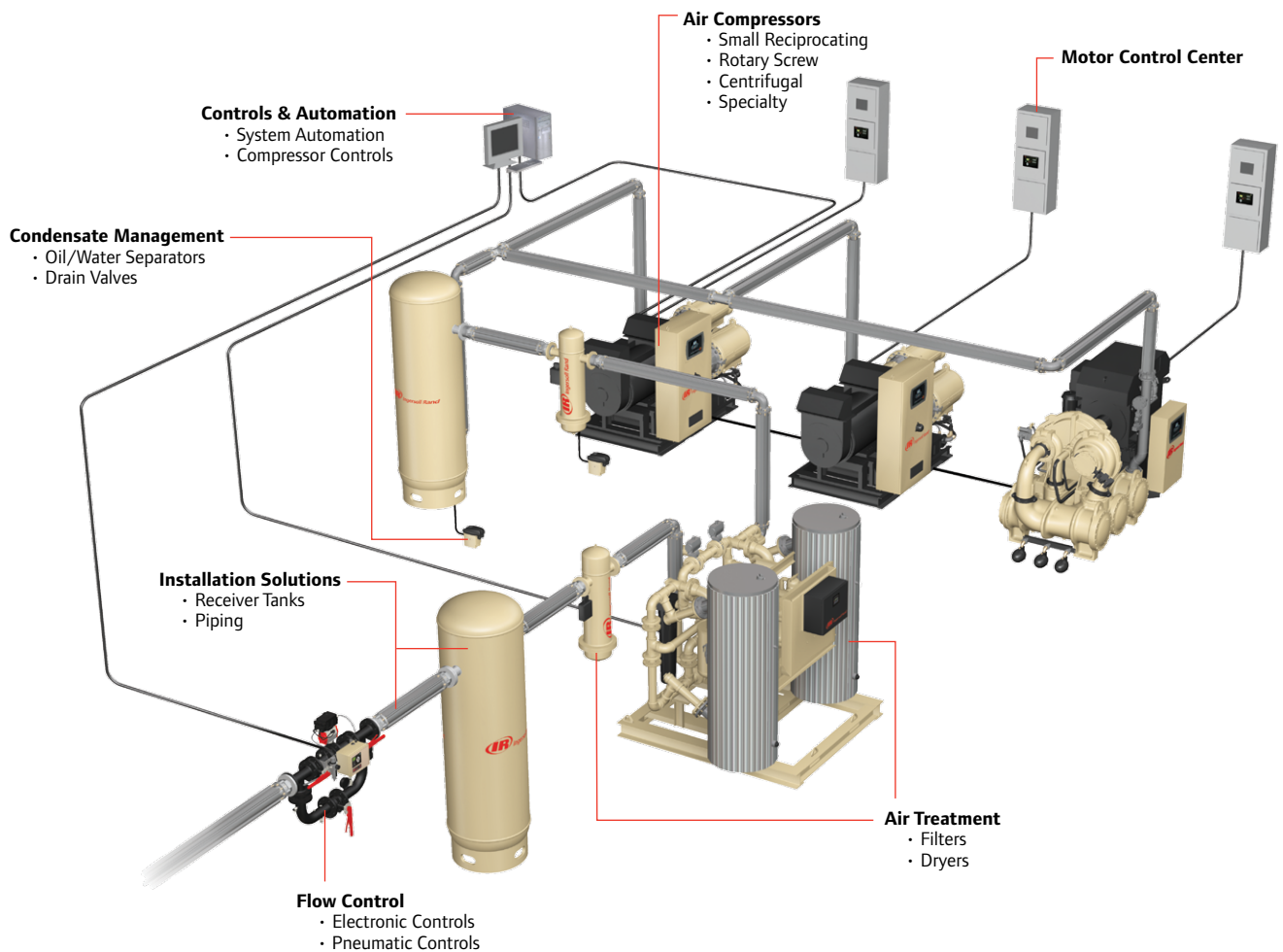
We Build Solutions

We do more than build products at Ingersoll Rand. We bring our customers unmatched experience in designing comprehensive compressed air systems that cover virtually any need.

Systems and Support to Keep You Productive

Ingersoll Rand not only designs and builds extremely efficient air systems, it solves process and business problems as well. This helps customers succeed in today's global economy through enhanced reliability, energy efficiency and productivity.

No matter what your industry or location, Ingersoll Rand is committed to serving you 24/7. Our worldwide network of distributors, engineers and certified, factory-trained technicians are a phone call away—ready to support you with innovative, cost-effective and performance-enhancing solutions.

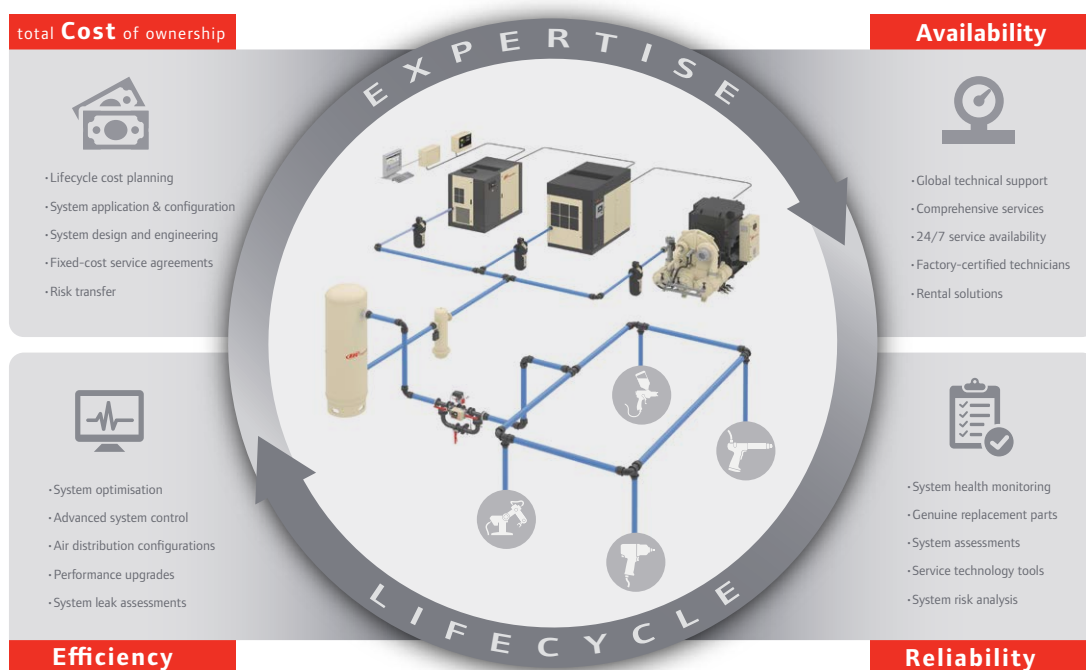


Low Pressure			
Model	Pressure bar g	Flow m ³ /min	Power kW
CH4	1.5-2.0	25-40	30-110
CH5	1.0-2.0	42-80	130-270
CH6	1.0-2.0	90-160	170-430
2CII-DF	1.5-2.0	180-280	500-800
3ACII-DF	1.7-2.0	400-500	1500-1750
Standard Pressure			
Model	Pressure bar g	Flow m ³ /min	Power kW
CV1	6.0-10.5	25-40	170-270
C400	3.0-8.5	45-65	200-480
C700/CC700	3.0-10.5	55-115	270-700
C800	3.0-13.0	65-150	350-950
C950	3.0-10.5	120-170	375-1100
C1000	3.0-10.5	135-220	600-1300
3ACII	3.0-10.5	170-255	850-1900
C3000	3.0-10.5	270-450	1200-2600
5CII	3.0-10.5	350-800	1800-4500
High Pressure			
Model	Pressure bar g	Flow m ³ /min	Power kW
C750	30-42	50-60	650-750
2CII	11-24	90-140	800-1200
3CI	11-24	170-255	600-2000
4CI	11-24	255-425	1100-3400

Performance is nominal. Please contact Ingersoll Rand for specific data.

Your Trusted Partner in Compressed Air

Ingersoll Rand products and services optimize total **Cost** of ownership, while maximising **Availability**, **Reliability** and **Efficiency** for the entire lifecycle of your system.



Design • Install • Commission • Operate • Maintain • Extend



Ingersoll Rand (NYSE:IR) advances the quality of life by creating comfortable, sustainable and efficient environments. Our people and our family of brands—including Club Car®, Ingersoll Rand®, Thermo King® and Trane®—work together to enhance the quality and comfort of air in homes and buildings; transport and protect food and perishables; and increase industrial productivity and efficiency. We are a \$13 billion global business committed to a world of sustainable progress and enduring results.



IngersollRandProducts.com



Member of Pneurop



Ingersoll Rand, IR, the IR Logo and MSG Centac are trademarks of Ingersoll Rand, its subsidiaries and/or affiliates. All other trademarks are the property of their respective owners.

Ingersoll Rand compressors are not designed, intended or approved for breathing air applications. Ingersoll Rand does not approve specialised equipment for breathing air applications and assumes no responsibility or liability for compressors used for breathing air service.

Nothing contained on these pages is intended to extend any warranty or representation, expressed or implied, regarding the product described herein. Any such warranties or other terms and conditions of sale of products shall be in accordance with Ingersoll Rand's standard terms and conditions of sale for such products, which are available upon request.

Product improvement is a continuing goal at Ingersoll Rand. Any designs, diagrams, pictures, photographs and specifications contained within this document are for representative purposes only and may include optional scope and/or functionality and are subject to change without notice or obligation.